

RESOLUTION NO. R21-130

**A RESOLUTION AWARDING THE BID AND AUTHORIZING THE
MAYOR TO SIGN AN AGREEMENT WITH SWS EQUIPMENT, LLC FOR THE
PURCHASE OF A ROLL-OFF CONTAINER TRUCK FOR THE
CITY OF LAUREL'S PUBLIC WORKS DEPARTMENT.**

WHEREAS, the City of Laurel needs a roll-off container truck for its Public Works Department; and

WHEREAS, the City of Laurel complied with its procurement policy and Montana Law by utilizing a competitive bid process to ensure the equipment purchased is in the best interest of the City in both quality and price; and

WHEREAS, SWS Equipment, LLC was the lowest qualified bidder; and

WHEREAS, the lowest bid was for \$196,450 and the bid documents are attached hereto and incorporated herein.

NOW, THEREFORE, BE IT RESOLVED by the City Council of the City of Laurel, Montana,

That the Mayor is authorized to sign an agreement with SWS Equipment, LLC for the purchase of the roll-off container truck for the total purchase price of \$196,450 pursuant to the attached bid documents.

Introduced at a regular meeting of the City Council on December 28, 2021, by Council Member Herr.

PASSED and APPROVED by the City Council of the City of Laurel this 28th day of December 2021.

APPROVED by the Mayor this 28th day of December 2021.

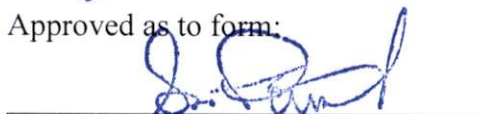
CITY OF LAUREL


Emelie Eaton, Mayor

ATTEST:


Bethany Langve, Clerk-Treasurer

Approved as to form:


Sam S. Painter, Civil City Attorney

CITY CLERK
CITY OF LAUREL
P. O. BOX 10
LAUREL, MONTANA 59044

CONTRACT/BID DOCUMENTS ATTACHED:

INTENT AND SCOPE OF OPERATIONS
CALL FOR SEALED BIDS: NOTICE TO BIDDERS
(BID BOND AND PERFORMANCE BOND)
INSTRUCTIONS TO BIDDERS
CONTRACT SPECIFICATIONS:
2022 (OR NEWER) ROLL OFF CONTAINER TRUCK
STANDARD TERMS AND CONDITIONS
INVITATION TO BID
FORM OF AGREEMENT
FORM OF PROPOSAL (BID PROPOSAL)

INTENT AND SCOPE OF OPERATIONS

This bid is for the purpose of entering into a contract for a 2022 (OR NEWER) TANDEM CONVENTIONAL CAB, 2007 MODEL, 54,000 G.V.W. TRUCK CAB AND CHASSIS AND CHAIN ROLL-OFF SYSTEM for the City of Laurel Public Works Department. The successful bidder agrees to provide the City of Laurel with acceptable quality of equipment/services, performance and workmanship as determined by the City of Laurel.

It is the purpose of this bid to obtain the best quality of equipment at the most favorable price to the City of Laurel. Consideration will be given for the level of service offered and ability to meet stated specifications as outlined in the contract document.

END: INTENT AND SCOPE OF OPERATIONS

CITY CLERK
CITY OF LAUREL
P. O. BOX 10
LAUREL, MONTANA 59044

CALL FOR SEALED BIDS: NOTICE TO BIDDERS

Sealed bids entitled: **2022 Roll Off Container Truck**

For the City of Laurel Maintenance Department, Laurel, Montana

Will be received addressed to City Clerk of Laurel, Montana, at the office of the City Clerk, City Hall, Laurel, Montana 59044, until 1:00 p.m. December 2nd, 2021.

More specific additional information regarding the **2022 (OR NEWER) TANDEM CONVENTIONAL CAB., 54,000 G.V.W. TRUCK CAB AND CHASSIS AND CHAIN ROLL-OFF SYSTEM** may be obtained by contacting Matt Wheeler, Public Works Superintendent, at 115 W. First Street, Laurel, Montana, phone number of 406-628-4796 or visit <https://cityoflaurelmontana.com/rfps>.

Each bid or proposal must be accompanied by a Certified Check, Cashiers Check, or Bid Bond payable to the City of Laurel, Montana, in an amount not less than ten per cent (10%) of the total amount of the bid. The bid bond will be retained by the City Clerk until the successful bidder enters into a contract with the City of Laurel. If the successful bidder enters into no contract within 30 days the bond will be forfeited to the City of Laurel. Bid bonds will be returned to the unsuccessful bidders immediately after final action on the bid by the City Council.

No bids may be withdrawn after the scheduled time for the public opening of bids, which is at 1:00 p.m. December 2nd, 2021, at 115 W. 1st Street Laurel, MT 59044.

The right is reserved to reject any or all proposals received, to waive irregularities, to postpone the award of the contract for a period of not to exceed thirty (30) days, and to accept that proposal which is in the best interests of the City of Laurel, Montana.

The City of Laurel is an Equal Opportunity Employer

Published 11/19/2021; 11/26/2021

Bethany Langve, City Clerk/ Treasurer

END: CALL FOR SEALED BIDS: NOTICE TO BIDDERS

CITY CLERK
CITY OF LAUREL
P. O. BOX 10
LAUREL, MONTANA 59044

INSTRUCTIONS TO BIDDERS

EXAMINATION OF DOCUMENTS

Before submitting the proposals, the bidder shall:

- (a) Carefully examine the Standards and Specifications as well as all other attached documents.
- (b) Fully inform themselves of the existing conditions and limitations.
- (c) Include with the bid sufficient information to cover all items required in the specifications.

BID COMPLIANCE

It shall be the responsibility of the bidder to see that all bids are sealed and submitted to the office of the City Clerk at City Hall, 115 W. First Street, Laurel, Montana 59044, before 1:00 p.m. December 2nd, 2021.

BID PROPOSAL MODIFICATIONS

Proposals shall be made on form provided herein; they shall not contain any recapulation of the work done. Modifications, additions or changes to the terms and conditions of this invitation to bid may be cause for rejection of the bid. Bids submitted on other forms may be rejected. No oral, telephone, or telegraphic bids or modifications will be considered.

CERTIFICATION OF ALTERATION OR ERASURE

A bid shall be rejected should it contain any material alteration or erasure, unless, before the bid is submitted, each such alteration has been initialed in INK by the authorized agent signing the bid.

INTERPRETATION PRIORITY

Should a bidder find discrepancies in, or omissions from, the specifications, or be in doubt as to their meaning, bidder shall notify the department head, Matt Wheeler at the address noted above, who will send written instructions or addenda to all bidders. The City will not be responsible for oral interpretation. All addenda issued prior to bid opening shall be incorporated

into and become part of the contract agreement upon award. Question received less than ninety-six (96) hours before the bid opening cannot be answered.

SIGNATURE

All bids shall be typewritten or prepared in ink and must be signed in longhand by the bidder or bidders agent or designee, with his/hers usual signature. A bid submitted by a partnership must be signed with the partnership name to be followed by the signature and designation of the partner signing. Bids by corporations must be signed with the legal name of the corporation, followed by the name and signature of an authorized agent or officer of the corporation. Bids submitted by a proprietorship must be signed by the owner; name of each person signing shall be typed or printed legibly below the signature.

WITHDRAWAL OF BIDS

Bidders may withdraw their bid either personally or by written request at any time prior to the time set for bid opening. No bid may be withdrawn or modified after the time set for opening, unless and until award of the contract is delayed for a period exceeding thirty (30) days.

CERTIFICATION

The bidder certifies that the bid has been arrived at by the bidder independently and has been submitted without any collusion designed to limit independent bidding or competition. The bidder further certifies that the materials, products, services and/or goods offered herein meet all requirements of the stated specification and are equal in quality, value and performance with highest quality, nationally advertised brand and/or trade names.

EVIDENCE OF QUALIFICATION

Upon request of the City of Laurel, a bidder whose proposal is under consideration for award may be required to manifest satisfactory evidence of his financial resources, experience, the organization and equipment as well as service provisions bidder has available. In determining the lowest responsible bidder, in addition to price, the following considerations may be addressed:

- (a) The ability, capacity, character, integrity, and skill of the bidder to perform the contract or provide the service required.
- (b) Whether the bidder can perform the contract within the time specified.
- (c) The quality of performance of previous contracts, agreements, services and/or performance.
- (d) Previous and/or existing compliance by the bidder with laws relating to the contract or services.
- (e) Such other information, which may be secured having a bearing on the decision to award the contract.

BID BOND

Each bid or proposal must be accompanied by a Certified Check, Cashiers Check, or Bid Bond payable to the City of Laurel, Montana, in an amount not less than ten percent (10%) of the total amount of the bid. The bid bond will be retained by the City Clerk until successful bidder enters into a contract with the City of Laurel. If the successful bidder enters into no contract within thirty (30) days the bond will be forfeited to the City of Laurel. Bid bonds will be returned to the unsuccessful bidders immediately after final action on the bid by the City Council.

END: INSTRUCTIONS TO BIDDERS

CITY CLERK
CITY OF LAUREL
P. O. BOX 10
LAUREL, MONTANA 59044

CONTRACT SPECIFICATIONS

2022 (OR NEWER) NEW TANDEM CONVENTIONAL CAB. 54,000 G.V.W.
TRUCK CAB AND CHASSIS AND CHAIN ROLL-OFF SYSTEM

END SPECIFICATIONS

CITY CLERK
CITY OF LAUREL
P. O. BOX 10
LAUREL, MONTANA 59044

STANDARD TERMS AND CONDITIONS – PAGE 1

This contract includes the following Standard Terms and Conditions and includes, but is not limited to, the Invitation to Bid, Call for Sealed Bids, Specifications, Forms of Agreement, Instruction to Bidders, and Form of Proposal.

The contractor will not be liable for any delay in furnishing or failure to furnish service due to fire, flood, strike, lockout, dispute with workmen, act of God, or any cause beyond reasonable control.

In case of default by the successful bidder or failure to deliver the goods or services within the time specified, the City Purchasing Authority, after written notice, may procure them from other sources and hold contractor responsible for excess costs occasioned thereby.

The specifications attached to the instructions to bidders establish a standard of quality desired by the City of Laurel. Any bidder may submit quotations on any article, which substantially complies with these specifications as to quality, workmanship and service. The City of Laurel reserves the right to make its selection of materials or services purchased, based on its best judgment as to which articles substantially comply with the requirements of the specifications.

No alteration in any of the terms, conditions, delivery, quality, or specifications will be effective without prior written consent of the City of Laurel.

No exception to delivery or service dates shall be allowed unless prior written approval is first obtained for the City of Laurel.

All payments to the contractor shall be remitted by mail. The City shall not honor drafts, nor accept goods on a sight draft basis. Furthermore, the provisions or monies due under this contract shall not be assignable unless prior written approval is first obtained from the City of Laurel.

All goods, materials or services purchased herein are subject to approval by the City of Laurel. Any rejections of services, goods or materials, whether held by the City or returned, will be at the contractor's risk and expense.

The contractor agrees to assume all expense, protect and hold harmless the City, its officers, agents and employees against all claims and expense including, but not limited to, suits or proceedings for patent, trademark, copyright, or franchise infringement arising from the purchase, installation or use of the goods, material or services purchased herein.

The contractor further agrees to assume all expenses and damages arising from such claim, suits or proceedings.

CITY CLERK
CITY OF LAUREL
P. O. BOX 10
LAUREL, MONTANA 59044

STANDARD TERMS AND CONDITIONS – PAGE 2

Contractor agrees that the waiver, acceptance, or failure by the City to enforce any provisions, terms, or conditions of this contract shall not operate or be construed as a waiver of prior or subsequent breaches or the right of the City to thereafter enforce such provisions.

The contractor warrants all articles supplied under this contract conform to specification herein. The contractor will deliver a warranty stating that articles supplied under the contract are fit and sufficient for the purpose manufactured, merchantable, and free from defects.

In the event the City is entitled to a prompt payment or cash discount the period of computation shall commence on the date of delivery, or receipt of correctly completed invoices, whichever is later. If an adjustment in payment is necessary, the discount period shall commence on the date final approval for payment is authorized.

The contractor agrees not to be discriminate against any client employee or applicant for employment or for services, because of race, creed, color, national origin, sex or age with regard to, but not limited to, the following: employment upgrading; demotion or transfer; recruitment advertising; layoffs and termination; rates of pay or other forms of compensation; selection for training; rendition of services. It is further understood that any contractor who is in violation of this shall be barred forthwith from receiving awards of any purchase order for the City unless a satisfactory showing is made that discriminatory practices have terminated and that a reoccurrence of such acts are unlikely.

The City reserves the right to cancel and terminate this contract forthwith upon giving thirty (30) days written notice to the contractor. (This provision does not apply to the purchase of materials and equipment. A purchase order for materials and equipment is a binding contract.)

Contractor agrees that in the event suit is instituted by the City for any default on the part of the contractor, he shall pay to the City all costs and expenses expended or incurred by the City in connection therewith, and reasonable attorney fees.

Where applicable, possible or required, bidder is required to submit descriptive literature, sample material, design sketches and detailed shop drawings. Failure to submit required items may result in rejection of the bid or termination of contract.

The successful bidder may not make any advertising or sale use of the fact contract items are being used by purchaser and other approved agencies, under penalty of contract termination.

The Advertisement for Bids, the accepted Proposal, and the specifications, together form the contract and they fully act as if hereto attached or herein repeated.

CITY CLERK
CITY OF LAUREL
P. O. BOX 10
LAUREL, MONTANA 59044

STANDARD TERMS AND CONDITIONS – PAGE 3

This contract shall be governed by and construed in accordance with the laws of the State of Montana.

The contractor may not assign or subcontract the agreement or the right to receive reasonable performance of any act called for by the contract shall be deemed waived by a waiver by City of a breach thereof as to any particular transaction or occurrence.

Regardless of FOB point contractor agrees to bear all risks of loss, injury, or destruction of goods and materials ordered herein and such loss, injury, or destruction shall not release contractor from any obligation hereunder.

END: STANDARD TERMS AND CONDITIONS

CITY CLERK
CITY OF LAUREL
P. O. BOX 10
LAUREL, MONTANA 59044

INVITATION TO BID

RETURN TO: City Clerk, City of Laurel, P.O. Box 10, Laurel, Montana 59044

Please bid net prices at which you will agree to furnish required services. To receive consideration, this form must be signed in full by a responsible, authorized agent, office, employee or representative of your firm.

BID ITEM: 2023 FREIGHTLINER 114 SD WITH NEW
60,000 LB HOIST BY AYA WELDING

Enter full Company Name and Address

SWS Equipment
PO Box 13040, SPOKANE-WA.
AND 18384 MORGAN LN.
FRENCHTOWN, MT 59834

CONDITIONS AGREEMENT

We have read and agree to the conditions and stipulations contained herein and to the Standard Terms and Conditions contained on the attached.

We further agree to furnish the services specified at the prices stated herein, to be delivered to the location and that date set forth herein.

Logan Seatty
Signature

MT. TERRITORY MGR.
Title

12-01-21
Date

END: INVITATION TO BID

CITY CLERK
CITY OF LAUREL
P. O. BOX 10
LAUREL, MONTANA 59044

FORM OF AGREEMENT – PAGE 1

AGREEMENT, made on the 28th day of December, 2021, by and between
the City of Laurel and SWS Equipment.

WITNESSTH that the above named company and the City of Laurel, for consideration,
hereinafter name agree as follows:

SCOPE OF OPERATION: The contractor shall provide material and equipment, perform the
work and do everything required by the specifications entitled:

CONTRACT SPECIFICATION:

TIME OF COMPLETION: Delivery of goods, equipment, and/or services shall be expected
within thirty (30) days of the award of bid.

FOLLOWING IS AN ENUMERATION OF THE CONTRACT BID

Intent and Scope of Operation
Call for Sealed Bids: Notice to Bidders
(Bid Bond/Performance Bond)
Instructions to Bidders
Contract Specifications
Standard Terms and Conditions
Invitation to Bid
Form of Agreement
Form of Proposal (Bid Proposal)

IN WITNESS WHEREOF, the parties hereto have executed this agreement to day and
year above written.

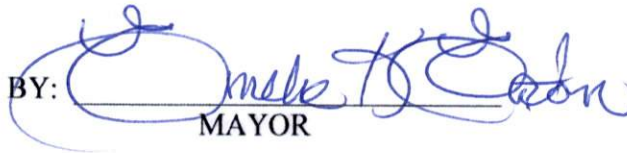
Contractor

By: _____
Title _____

CITY CLERK
CITY OF LAUREL
P. O. BOX 10
LAUREL, MONTANA 59044

FORM OF AGREEMENT – PAGE 2

CITY OF LAUREL

BY: 
MAYOR

ATTEST: 
City Clerk

Approved as to form

END: FORM OF AGREEMENT

CITY CLERK
CITY OF LAUREL
P. O. BOX 10
LAUREL, MONTANA 59044

FORM OF PROPOSAL (BID PROPOSAL)

The undersigned hereby submits the following proposal: Having carefully examined the specifications entitled CONTRACT SPECIFICATIONS: 2022 OR NEWER TANDEM CONVENTIONAL CAB., 54,000 G.V.W. TRUCK CAB AND CHASSIS AND CHAIN ROLL-OFF SYSTEM for the City of Laurel Public Works Department, as well as all other conditions affecting the bid, the undersigned proposes to furnish all equipment and services necessary to complete the work required.

365 - 500 Day Delivery
Time and Date of Delivery

2023 FREIGHTLINE 114SD WITH A+A HOIST
By SWS Equipment

2022 OR NEWER TANDEM CONVENTIONAL CAB., 54,000 G.V.W. TRUCK CAB
AND CHASSIS AND CHAIN ROLL-OFF SYSTEM

Net FOB Laurel, Montana

\$ 196,450.00

+++++

(OPTIONS OR PAYMENT PLANS, IF APPLICABLE)

By Logan Beatty

Title MT. TERRITORY MGR.

Company SWS Equipment

Date 12-01-21

END: FORM OF PROPOSAL (BID PROPOSAL)

GENERAL BIDDING GUIDELINES:

If bid specification is met than place a check in the column marked "YES". If it is necessary to bid alternate equipment or to take exceptions to the specifications as set forth, this must be checked as "NO".

The Basis of Award shall be dependent on the most responsible bid submitted. Consideration will be given to cash flow, purchase price, delivery dates, equipment service guarantees, parts and service availability, parts and service location, analyses and comparison of equipment specification details, and any other items of concern to the City of Laurel.

The purchaser reserves the right to reject any or all bids, to waive any informality in bids, or to accept in whole or part such a bid as may be in the best interest of the City of Laurel.

The purchaser also reserves the right to reject the vehicle at the time of final inspection if the vehicle does not meet any and/or all requirements of the final contract according to the personnel acting on behalf of the department at the time of final inspection. These requirements include, but are not limited to: performance, workmanship, service, quality and operation of the vehicle.

Please state the estimated delivery time after receipt of order in days: 365 - 500 Days

BID SPECIFICATIONS FOR ROLL-OFF CHASSIS

	Y	N
FOR NEW MODEL YEAR 2022 CAB AND CHASSIS <u>2023</u>	<input checked="" type="checkbox"/>	<input type="checkbox"/>
ALL STANDARD CAB/CHASSIS OPTIONS TO BE INCLUDED	<input checked="" type="checkbox"/>	<input type="checkbox"/>
ENGINE:		
13-Liter @ 375 horsepower, 2100 rpm 1450 lb-ft torque <u>DD13 Detroit</u>	<input checked="" type="checkbox"/>	<input type="checkbox"/>
EAA 2014-emissions, etc.	<input checked="" type="checkbox"/>	<input type="checkbox"/>
ENGINE EQUIPMENT:		
Single stage air cleaner; hood-mounted air intake	<input checked="" type="checkbox"/>	<input type="checkbox"/>
240 sq. in., 2-core radiator <u>1500 Sq. In</u>	<input checked="" type="checkbox"/>	<input type="checkbox"/>
Extended life antifreeze to -34 (Fahrenheit)	<input checked="" type="checkbox"/>	<input type="checkbox"/>
Electronic viscous fan clutch	<input checked="" type="checkbox"/>	<input type="checkbox"/>
Delco Remy 12V 39 MTHD Starter	<input checked="" type="checkbox"/>	<input type="checkbox"/>
(3)-CCA maintenance free 12V batteries, 1950 CCA	<input checked="" type="checkbox"/>	<input type="checkbox"/>
1V annual battery disconnect main switch	<input checked="" type="checkbox"/>	<input type="checkbox"/>
18.5 gallon LH frame-mounted Diesel Exhaust Fluid (DEF) tank <u>13 gallon</u>	<input checked="" type="checkbox"/>	<input type="checkbox"/>
Compact DPF mounted RH side under cab, frame-mounted SCR	<input checked="" type="checkbox"/>	<input type="checkbox"/>

Cab-mounted vertical, 10-ft aluminized stainless steel stack

Dual engine-mounted fuel filters with water separator

12V Electric fuel heater

Wabco 31.8CFM compressor

Phillips 120V 1500W LH receptacle block heater

Engine break

Prep for front engine PTO - for 1350/1450 flange

<input checked="" type="checkbox"/>	_____
<input checked="" type="checkbox"/>	_____
<input checked="" type="checkbox"/>	_____
<input checked="" type="checkbox"/>	_____
<input checked="" type="checkbox"/>	_____

y N

TRANSMISSION:

6-speed automatic transmission direct drive premium shifter Synthetic	<i>ALLISON 4500RDS</i>	<u> </u>	<u> </u>
transmission lubricant		<u>✓</u>	<u> </u>
Water to oil trans cooler in radiator		<u>✓</u>	<u> </u>
Spicer life driveline with XL U-joints; upgrade driveline two sizes		<u>✓</u>	<u> </u>
17" single plate dampened organic clutch (no clutch pedal)		<u> </u>	<u>✓</u>

FRONT AXLE:

14,600 pound front springs		<u>✓</u>	<u> </u>
Front brake Bendix Spicer, Cast S-cam, standard lube; size = 16.5 x 5	<i>Meritor</i>	<u>✓</u>	<u> </u>
Cast iron front brake drum, outboard-mounted		<u>✓</u>	<u> </u>
Brake lining material front, Bendix Spicer ES-600	<i>NON-Asbestos</i>	<u>✓</u>	<u> </u>
Front brake dust shields		<u>✓</u>	<u> </u>
Iron preset front axle hub		<u>✓</u>	<u> </u>
Conmet Plus front oil seal		<u>✓</u>	<u> </u>
Wheel nut type- lock tab front spindle nuts	<i>standard Spindle Nuts</i>	<u> </u>	<u>✓</u>
Stemco visible cap with drain		<u>✓</u>	<u> </u>
Synthetic front axle lubricant		<u>✓</u>	<u> </u>
TRW THP60 Integral power steering gear; sealed drag link	<i>TRW-TAS-85</i>	<u>✓</u>	<u> </u>
Parabolic leaf front suspension	<i>Taper LEAF</i>	<u>✓</u>	<u> </u>
Front shock absorbers		<u>✓</u>	<u> </u>

REAR AXLE:

Meritor MT-40-14X4D Hypoid (heavy-duty housing) 40K lb capacity	<i>MT-40-14X</i>	<u>✓</u>	<u> </u>
3.55 rear axle ratio	<i>4.63 Ratio</i>	<u> </u>	<u>✓</u>
Interaxle differential lock		<u>✓</u>	<u> </u>

	Y	N
40K lb 2-leaf firm ride parabolic spring suspension, 54" spacing <i>FLAT LEAF 4 spring 52"</i>	<input type="checkbox"/>	<input checked="" type="checkbox"/>
Rear shock absorbers	<input checked="" type="checkbox"/>	<input type="checkbox"/>
Rear brake Bendix Spicer, Cast S-cam, standard lube; size 16.6 x 7 <i>meritor</i>	<input checked="" type="checkbox"/>	<input type="checkbox"/>
Cast iron drive axle brake drum, outboard mounted	<input checked="" type="checkbox"/>	<input type="checkbox"/>
Rear brake dust shields	<input checked="" type="checkbox"/>	<input type="checkbox"/>
Brake lining material drive, Bendix Spicer ES-600 <i>NON-Asbestos</i>	<input checked="" type="checkbox"/>	<input type="checkbox"/>
Iron preset drive axle hub	<input checked="" type="checkbox"/>	<input type="checkbox"/>
Wheel nut type- lock tab drive spindle nuts	<input checked="" type="checkbox"/>	<input type="checkbox"/>
Conmet Plus drive oil seal	<input checked="" type="checkbox"/>	<input type="checkbox"/>
Chevron Delo gear lubricant ESI SAE 80W-90 <i>75-90 Synthetic</i>	<input checked="" type="checkbox"/>	<input type="checkbox"/>
Haldex brake adjuster- front, rear, and pusher	<input checked="" type="checkbox"/>	<input type="checkbox"/>

AUXILIARY AXLE:

Hendrickson Compositlite ST 13k steerable pusher axle, factory installed	<u>PLEASE SEE</u>	
Spacing 60" ahead of FWD drive axle	<u>OPTIONS PAGE</u>	
Auxiliary axle brake size 15 x 4	<u>OPTIONS PAGE</u>	
Cast iron auxiliary brake drum	<u>OPTIONS PAGE</u>	
Pusher brake Bendix Spicer, Cast S-cam, standard lube	<u>OPTIONS PAGE</u>	
Pusher brake lining material, Eaton EES-600	<u>OPTIONS PAGE</u>	
Aux. axle control- up/down switch inside cab only	<u>OPTIONS PAGE</u>	
Iron preset auxiliary axle hubs	<u>OPTIONS PAGE</u>	
Chicago Rawhide Plus XL auxiliary oil seals	<u>OPTIONS PAGE</u>	
Wheel nut type- lock tab auxiliary spindle nuts	<u>OPTIONS PAGE</u>	

CHASSIS:

Frame-mounted SCR (Selective Catalytic Reduction)	<input checked="" type="checkbox"/>	<input type="checkbox"/>
---	-------------------------------------	--------------------------

	Y	N
75-gallon LH aluminum cylindrical fuel tank; No RH fuel tank <i>80 gallon</i>	<input checked="" type="checkbox"/>	<input type="checkbox"/>
LH battery box, 3-capacity; DEF tank mounted behind battery box	<input type="checkbox"/>	<input checked="" type="checkbox"/>
291" wheelbase, 55" overhang	<input checked="" type="checkbox"/>	<input type="checkbox"/>
Meritor Wabco air dryer, 1200UP w/ heater and coalescing oil filter	<input checked="" type="checkbox"/>	<input type="checkbox"/>
Steel air tanks; manual pull cord on all tanks	<input checked="" type="checkbox"/>	<input type="checkbox"/>
Frame rail- 118" x 4.13" x .44" straight steel rails <i>1/2 X 3.64 X 11 7/8"</i>	<input checked="" type="checkbox"/>	<input type="checkbox"/>
Steel construction 3-piece bumper <i>ONE Piece Bumper 14"</i>	<input checked="" type="checkbox"/>	<input type="checkbox"/>
Two front towing devices; two rear tow hooks (frame-mounted)	<input checked="" type="checkbox"/>	<input type="checkbox"/>
CAB (OUTSIDE):		
High-strength steel day cab with B-pillar mounted exhaust <i>ALuminum Cab.</i>	<input type="checkbox"/>	<input checked="" type="checkbox"/>
Air-ride cab suspension with lateral dampeners	<input checked="" type="checkbox"/>	<input type="checkbox"/>
Stationary front grill; bug screen behind grill	<input checked="" type="checkbox"/>	<input type="checkbox"/>
Dual trumpet air horns mounted under cab <i>SINGLE HORN</i>	<input checked="" type="checkbox"/>	<input type="checkbox"/>
Black vocational heated, power axis mirrors with long arms <i>Bright Finish</i>	<input checked="" type="checkbox"/>	<input type="checkbox"/>
Auxiliary down-view mirror over passenger door	<input checked="" type="checkbox"/>	<input type="checkbox"/>
Fiberglass exterior sun visor with LED marker lamps	<input checked="" type="checkbox"/>	<input type="checkbox"/>
Electric backup alarm	<input checked="" type="checkbox"/>	<input type="checkbox"/>
Complete body builder kit, ECU dash to chassis; connections back of cab	<input checked="" type="checkbox"/>	<input type="checkbox"/>
Halogen headlamps; daytime running lights; dual w/ integral backup lights	<input checked="" type="checkbox"/>	<input type="checkbox"/>
CAB (INSIDE):		
18" Steering wheel, adjustable steering column	<input checked="" type="checkbox"/>	<input type="checkbox"/>
Driver-side SRS air bag	<input checked="" type="checkbox"/>	<input type="checkbox"/>
Safety belt indicator and audible reminder	<input checked="" type="checkbox"/>	<input type="checkbox"/>
Bendix anti-lock brake system; traction control w/ limited disable	<input type="checkbox"/>	<input type="checkbox"/>

	Y	N
Interior trim package- choice vinyl	<input checked="" type="checkbox"/>	<input type="checkbox"/>
National Comfort air suspension high back driver seat, fabric	<input checked="" type="checkbox"/>	<input type="checkbox"/>
Inboard driver seat armrest	<input checked="" type="checkbox"/>	<input type="checkbox"/>
Stationary tool box high back passenger seat, fabric	<input checked="" type="checkbox"/>	<input type="checkbox"/>
Integral air-conditioner with heater- manual controls	<input checked="" type="checkbox"/>	<input type="checkbox"/>
Netted overhead storage (both sides) w/ CB mounting and aux switches <i>No Netting</i>	<input type="checkbox"/>	<input checked="" type="checkbox"/>
10-gauge instrument cluster w/ premium driver information display	<input checked="" type="checkbox"/>	<input type="checkbox"/>
Enhanced diagnostics display in cluster (for basic and OBD fault codes)	<input checked="" type="checkbox"/>	<input type="checkbox"/>
AM/FM, CD, MP3, Bluetooth radio; Speakers in dash	<input checked="" type="checkbox"/>	<input type="checkbox"/>
Marker and headlamp interrupt, radio, phone controls in steering wheel	<input type="checkbox"/>	<input checked="" type="checkbox"/>
Self-cancelling turn signal switch	<input checked="" type="checkbox"/>	<input type="checkbox"/>
Dash-mounted CB hold down	<input type="checkbox"/>	<input checked="" type="checkbox"/>
Multi-purpose antenna 48" LH mirror mounted (AM/FM/CB)	<input checked="" type="checkbox"/>	<input type="checkbox"/>
Manual window lift; Manual door locks; 4 basic unique keys provided	<input checked="" type="checkbox"/>	<input type="checkbox"/>
One 12-volt electrical dash outlet	<input checked="" type="checkbox"/>	<input type="checkbox"/>
5-pound ABC dry type rechargeable fire extinguisher, mounted in cab	<input checked="" type="checkbox"/>	<input type="checkbox"/>
Auxiliary safety- triangle reflector kit	<input checked="" type="checkbox"/>	<input type="checkbox"/>
Instep lamp on driver side door	<input type="checkbox"/>	<input checked="" type="checkbox"/>
Interior illumination- LED lighting	<input type="checkbox"/>	<input checked="" type="checkbox"/>
New two-way radio to City of Laurel Specifications to be installed by Industrial Communications, Billings, MT	<input checked="" type="checkbox"/>	<input type="checkbox"/>
TIRES AND WHEELS		
12R22.5H Bridgestone R250F (14,780 lbs. GAWR) front tires	<input checked="" type="checkbox"/>	<input type="checkbox"/>
22.5 x 8.25 Accuride steel powder coat white 286B 5 HH hub piloted, front wheels	<input checked="" type="checkbox"/>	<input type="checkbox"/>
11R22.5G Bridgestone M770 (23,360 lbs. GAWR) rear tires	<input checked="" type="checkbox"/>	<input type="checkbox"/>

Y N

22.5 x 8.25 Maxion powder coat white 286BC 5 HH hub piloted, rear wheels

275/70R22.5J Bridgestone R250ED (14,000 lbs. GAWR) auxiliary tires

SEE OPTION PAGE

22.5 x 8.25 Maxion steel powder coat white 286BC 5 HH hub piloted, aux wheels

FOR LIFT AXLE

One spare 11R22.5 Bridgestone tire mounted on white steel 22.5 x 8.25 wheel

PAINT:

Cab single color paint- Glacier White

Chassis single color paint- Black

Bumper color- Glacier White **BLACK**

MANUALS:

All parts and service manuals

STATE BASE WARRANTY COVERAGES:

Engine: 2 years

Transmission: 3 years

DESCRIPTION	<u>MINIMUM REQUIREMENTS</u>	
TYPE	Chain ASA 200	<u>YES</u>
STRUCTURAL	50,000 lb. or more	<u>YES 60,000</u>
	MIUn Hoist Frame Tensile Strength 58,000 PSI	<u>YES</u>
	Container Guides 11." Steel Plate with Replaceable W Abrasion Resistant Wear Strips	<u>YES</u>
CONTROLS	Located in cab within reach of driver to allow engaging, loading, & unloading of container without leaving cab. Hoist up Warning Light.	<u>YES</u>
HYDRAULICS	35-gal. tank, truck frame mounted with 10" clean-out port	<u>YES 25 gal WITH SCREEN SUCTION</u>
	10micron spin-on type return line filter element	<u>YES</u>
	Standard PTO: Air over Air direct mount	<u>YES HOT SHIFT</u>
	Direct Mount Gear Driven Hydraulic Pump	<u>YES</u>
	Heavy-duty filter in return line with shut-off valve	<u>YES</u>
	A. 11 piping held in place by neoprene shock absorbing clamps	<u>YES</u>
CYLINDERS	Five-inch outside truck frame mounted	<u>YES</u>
PERFORMANCE	Unit purchased shall be capable of loading & unloading containers where weight of the roll-off system & 3--axle chassis will equal or exceed maximum legal loads on a 3-axle unit. Unit shall be capable of fully engaging a 22 ft. container skid.	<u>YES</u>
LIGHTING	Combination stop-tum-tail Lights-LED	<u>YES</u>
	All lights & reflectors to conform to Montana Vehicle & Federal codes	<u>YES</u>

DESCRIPTION	MINIMUM REQUIREMENTS	
FENDERS	Full coverage frame mounted with mud flaps both behind & ahead of rear wheels	<u>YES</u>
MISCELLANEOUS	Shall meet all DOT & OSHA regulations	<u>YES</u>
	Unit shall be from a standard, recognized manufacturer who has been manufacturing roll-off units for a minimum of two years & is recognized in the industry as such. Unit shall be of the latest manufacture.	<u>YES</u>
	Two (2) complete sets of operating, parts, & service manuals.	<u>YES</u>
WET LINE	A hydraulic line shall be provided to the back of the truck to allow for connection to refuse container that require hydraulics in order to be dumped. All lines to be protected.	<u>YES</u>
EQUIPMENT BOX	Box shall have minimum dimensions of 36" long x 18" wide x 18" deep. Box to be constructed of steel with over-lapping hinged lid and shall be mounted on driver's side of unit	<u>YES 30"</u>
REAR CONTAINER LOCKS	Spring Loaded with 44" of travel min.	<u>YES</u>
PAIN	Black	<u>YES</u>
WARRANTY	12-month minimum warranty of all parts & labor, except for lubrication and filters. The City shall be furnished (at no charge) copies of invoices for all work performed under warranty. They shall show all parts and labor charges.	<u>YES</u>

DESCRIPTION
WARRANTY/
continued

MINIMUM REQUIREMENTS

All Warranty Work shall be done by a company located in Billings. Bidder shall state name and location of warranty dealer:

YES

OPTIONAL SHOW
PRICE

Hendrickson Parnlift Ultra Self-steering, air lift, air suspension with single tires on Hub Piloted Budd rims, suspension capacity of 10,000/lbs. & axle capacity of 15,000 lbs. Unit to be installed complete in a pusher configuration compatible with roll-off unit. Axle layout shall be in accordance with State of Montana GVW regulations and shall provide a minimum of 42,000 lb. legal capacity on the rear axles and optimum weight distribution to front axle. Controls mounted in cab.

YES

Bidder shall show price to provide 100% 5 year warranty on the Lift Cylinders.

YES SEE OPTION PAGE

Bidder shall show price to provide additional 12 month warranty for all parts & labor except for lubrication and filters.

YES SEE OPTION PAGE

Roll-off truck tarp cover system operated from hydraulics on truck. Capable of covering all height/length containers. State brand and model number.

YES SEE OPTION PAGE

OPTIONAL

All other optional equipment available shall be quoted. Use additional sheet.

YES SEE OPTION PAGE

YES SEE OPTION PAGE

DESCRIPTION

MINIMUM REQUIREMENTS

YES

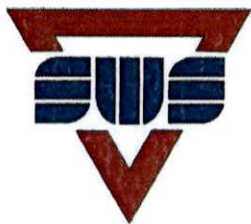
Bidders shall include with this proposal, satisfactory evidence that there is, available in the City of Billings, an adequate supply of replacement parts as may be required for repair & maintenance of any unit purchased as a result of the bid. The inability of any bidder to include such evidence shall result in an unfavorable consideration of this bid.

YES SPOKANE
AND BILLINGS

Consideration will be given in comparing proposals and awarding a contract not only to the amount of the proposal but also to the kind and quality of equipment offered, its suitability for the use in purposes intended, as well as the lowest ultimate cost to the City, and delivery date. Bidder must have recently performed a demonstration of model for bid to be considered. Previous history of poor performance, parts availability, and warranty service will exclude a bidder from consideration.

YES

END SPECIFICATIONS



SWS Equipment, LLC.

6515 E Nixon Ave, Spokane, WA 99213-30

Remit to: P.O. Box 13040, Spokane, WA 99213

509-533-9000 1-800-892-7831 F 509-533-1050

www.swsequipment.com

QUOTE

Quote #: ROCBQ8572

Date: 11/29/21

Sales Rep: Roger Beatty

FOB: City of Laurel

Ship Via: BESTWAY

Est. Ship Date:

Terms: Net 30

Quote To:

City Of Laurel
Mr. Matt Wheeler
PO Box 10
Laurel MT 59044
(406) 628-4796

Ship To:

City Of Laurel
Mr. Matt Wheeler
PO Box 10
Laurel MT 59044
(406) 628-4796

We are pleased to propose the following for your consideration

Qty	Description	Unit Price	Ext. Price
1.0	2022 Freightliner 114 SD	\$196,450.00	\$196,450.00
1.0	AA Advantage Roll Off System. 60,000lb Endless Chain Hoist, 22' Usable Rail		
1.0	Hot Shift PTO - Muncie Hot Shift Upgrade		
1.0	Allison Trans. Overspeed - Required on Allison Transmissions		
1.0	(2) Sets of Manuals		
1.0	Wet Line		
1.0	Freight to Laurel		
1.0	Additional Available Options		
1.0	Watson & Chalin Steerable Lift Axle ADD: \$12,000		
1.0	5 year lift cylinder warranty ADD: \$2,875		
1.0	12 Month Additional Warranty (24 months total) ADD: \$2,250		
1.0	Advantage Tarp System Hydraulic Auto Tarper with Outside Controls ADD: \$12,066		
1.0	Electric Over Air Hook Stops Front and Rear ADD: \$2,666.00		
1.0	Pintle Hitch ADD: \$3,000.00		
1.0	Work Lights on Boom ADD: \$686.00		
1.0	Hydraulic Oil Tank Heater ADD: \$933.00		
1.0	Upcharge for Alum Tool Box ADD: \$426.00		
1.0	Lift Axle upcharge for Aluminum Wheels ADD: \$ 1,166.00		
1.0	MATERIAL Surcharge		

Qty	Description	Unit Price	Ext. Price
1.0	Project Managed by Roger Beatty		
1.0	PLEASE SEE LIST OF OPTIONS TO COMPLETE YOUR PROJECT		
	Standard 1 year body warranty applies		
	Standard 1 year chassis warranty applies		
	Standard 2 year engine warranty applies		
	Standard 3 year transmission warranty applies		

Order Total \$196,450.00

Please contact me if I can be of further assistance.

QUOTE VALID FOR 10 DAYS

**PRICING IS SUBJECT TO CHANGE BASED ON CURRENT MATERIALS AND AVAILABILITY
 APPLICABLE SALES TAX NOT INCLUDED UNLESS OTHERWISE NOTATED - AMOUNT BASED ON FINAL INVOICE DATE
 ANY IMPLIED WARRANTY AS PER MANUFACTURER'S STANDARD WRITTEN WARRANTY
 PAYMENT DUE UPON COMPLETION OF WORK OR AS SPECIFIED ABOVE**

Signature: _____ Printed Name: _____ Date: _____

FREIGHTLINER

WORK SMART™

FREIGHTLINER 114SD

VOCATIONAL REFUSE SERVICE



FREIGHTLINER 114SD REFUSE SERVICE

114SD

FREIGHTLINER'S NEW 114SD: THE BEST SOLUTION TO YOUR TOUGHEST COLLECTION CHALLENGES.

In the refuse business it's all about reducing cycle times and upping efficiency. To maximize your profits in a challenging business environment, you need the performance and reliability of Freightliner's 114SD Severe Duty Refuse Service truck.

With multiple PTO options, up to 450 horsepower and up to 1650 lb-ft of torque, this truck is ready to do the heavy lifting. Add in our best-in-class visibility and up to 50-degree wheel cut and you've got a truck flexible enough to maneuver the toughest job sites or the tightest urban collection routes. And, with our clear-back-of-cab chassis, the 114SD is an easy upfit for equipment manufacturers, allowing greater flexibility.

Whether the application is manual or automated side-loader, large capacity rear loader, hook-lift or roll-on/roll-off, the 114SD will provide the durability and productivity you need for your business to work smart. Legendary Freightliner quality, insightful, industry-specific innovations and a comprehensive warranty all make the 114SD the perfect vehicle to meet your most severe duty needs.

STANDARD FEATURES

- 114" BBC steel reinforced aluminum day cab
- Set-forward front axle position @ 31"
- Strong, durable cab and hood
- Radiator-mounted mold-in color front grille with signature styling
- Front grille, headlight bezels, engine air intake grille, bumper and primary mirrors trimmed in black
- Halogen composite headlights
- Air rear cab mounts
- Ergonomic wing dash
- 63" x 14" rear window
- Up to 50-degree wheel cut depending on wheel equipment
- DD13® engine with 350 HP, 1350 lb-ft torque
- Eaton® Fuller® 10-speed manual transmission
- Front axle rated at 12,000 lbs
- Rear axle rated at 40,000 lbs
- 60-gallon cylindrical fuel tank

OPTIONAL FEATURES

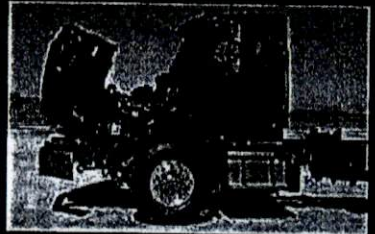
- Set-back front axle position @ 48"
- Bright-accented front grille with chromed grille surround, headlight bezels and engine air intake grille
- Engine air intake pre-cleaner
- Integral front frame extensions in 12" and 24" lengths
- Large selection of wheelbases with frames and frame reinforcements to meet severe duty needs
- Front engine, rear engine and transmission power take-offs
- Two or three batteries mounted under cab to optimize back-of-cab packaging
- Range of cylindrical and rectangular aluminum fuel tanks
- Carbon fiber reinforced aluminum type 3 compressed natural gas (CNG) fuel tanks with approximate range of 400 miles depending on application
- Steer axles from 12,000 to 22,000 lbs (23,000 lbs available Oct. 2011)
- Single drive axles from 21,000 to 38,000 lbs rating
- Tandem drive axles from 40,000 to 58,000 lbs rating
- Grab handles with rubber inserts
- Pusher and tag axles rated from 8,000 to 22,000 lbs available in single or dual configurations
- A wide range of Eaton® and Allison® transmissions
- Freightliner AirLiner® and TufTrac® rear suspensions
- Hendrickson® and Chalmers® rear suspensions
- Expanded dash instrumentation, switches and controls to meet almost any vocational application
- DD13 engine with up to 450 HP, 1650 lb-ft torque
- Cummins® ISC engine with up to 350 HP, 1000 lb-ft torque (available Oct. 2011)
- Cummins® ISL engine with up to 380 HP, 1300 lb-ft torque (available Oct. 2011)
- Cummins® Westport ISL G (natural gas) engine with up to 320 HP, 1000 lb-ft torque (available Dec. 2011)
- Frame-mounted front tow devices
- 3.2 million RBM single frame rail (available Oct. 2011)

Visit your local Freightliner dealer for complete specifications and options.

FIND A TRUCK FOR YOUR BUSINESS AT FREIGHTLINERTRUCKS.COM/WORKSMART



Ergonomically designed driver's area features an automotive-style dash, easy-to-read LED-backlit gauges and controls within easy reach.



Full tilt hood for easy engine access.



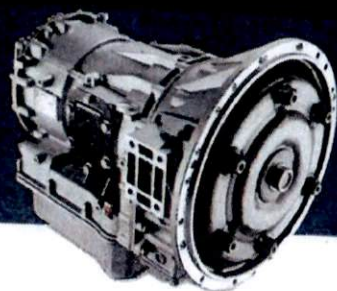
Ease of entry/exit.



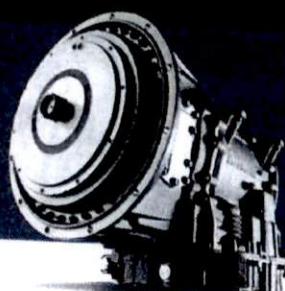
Under-cab storage for up to three batteries allows for clear back-of-cab packaging (set forward axle).



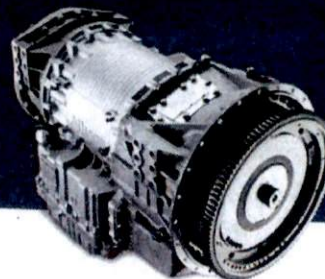
Competitive financing available through Daimler Truck Financial. For the Freightliner Trucks Dealer nearest you, call 1-800-FTL-HELP. www.freightlinertrucks.com. 15M, 6/11. FTU/MC-B-1080. Specifications are subject to change without notice. Freightliner Trucks is registered to ISO 9001:2000 and ISO 14001:2004. Copyright © 2011. Daimler Trucks North America LLC. All rights reserved. Freightliner Trucks is a division of Daimler Trucks North America LLC, a Daimler company.



1000 RDS, 1350 RDS, 2100 RDS,
2200 RDS, 2300 RDS, 2350 RDS,
2500 RDS, 2550 RDS



3000 RDS, 3500 RDS



4000 RDS, 4500 RDS, 4700 RDS

Proven Reliability And Durability

Our customers' ability to perform and produce is directly tied to the vehicles and equipment used to do the work. Allison transmissions are designed to deliver unrivaled reliability and durability while helping to protect vehicle driveline. By engineering and manufacturing reliable, fully automatic transmissions and propulsion systems, our customers experience reduced downtime and get more work done. That's why Allison Automatics are the preferred choice for on-/off-highway, rugged duty applications.

ENGINE	hp (kW)	TORQUE	lb-ft (N•m)
	165–600 (123–447)	420–1850	(569–2508)
GVW	lbs (kg)		
	14,000–unlimited (6,350–unlimited)		

Lower Cost Of Operation

When you factor in all life-cycle costs (vehicle purchase price, fuel, tires, preventive maintenance, component repair, driver wages and retail resale value)—along with the increased productivity—an Allison Automatic-equipped vehicle costs less per mile to operate than a comparable competitively-equipped vehicle. Calculate the life-cycle costs and savings for your vehicle using the Allison Advantage Calculator at allisontransmission.com.

THE "Advantage"

CONTINUOUS CHAIN ROLL-OFF HOIST

- * Heavy Duty Hook Carriage Rollers
On I-Beam Center Rail
- * Continuous Chain - 200 ASA Chain
- * 60,000 lb. Lifting Capacity
- * 20' and 22' Useable Rail Length
- * Dual Planetary Gear Drive
- * Spring Loaded Rear Container Locks



- * Cushion Action when Hoist in
Down Position
- * Full Steel Fenders 10 Gauge
- * Bi-Rotational Hydraulic Pump
- * Lockable Tool Box
- * I.C.C. Rear Crash Bar
- * Hoist Up Alarm



1-800-892-7831

www.solidwastesystems.com

Manufactured By: A.A. Welding, Inc., Vancouver, Washington

THE "Advantage"

CONTINUOUS CHAIN ROLL-OFF HOIST

Available Models

AA24-200 24' Overall Length - 22' Useable Rail - 200 ASA Chain
AA22-200 22' Overall Length - 20' Useable Rail - 200 ASA Chain

Chassis Length Requirements

24' System - Minimum C.T. = 195"
22' System - Minimum C.T. = 175"
Add 10" for Auto Tarper System

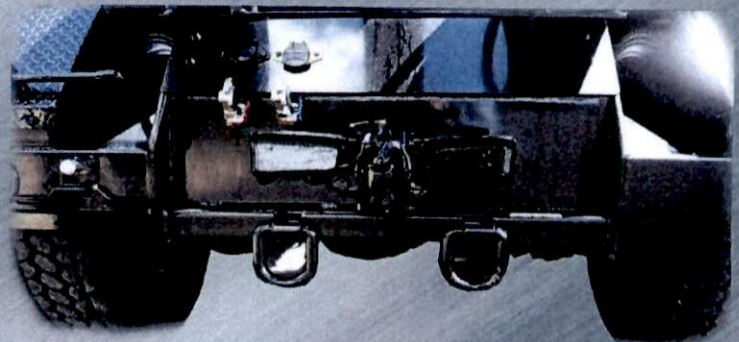
Standard Features

Type:	Continuous Chain - 200 ASA
Capacity:	60,000 lb. Chain Pull
System Drive:	Dual Planetary Gear Drive
Rail Size:	4" X 10" X .250 Tubing
Hook System:	Heavy Duty Hook Carriage 3" Rollers I-beam Center Rail
Hoist Cylinder:	Boom Slow-Down - Adjustable for speed
Hydraulic Pump:	Bi-Rotational
PTO:	Air Shift PTO
Rear Fenders:	Full Steel Rear Fenders 10 Gauge
Inside Cab Controls:	Available in Cable, Air or Electric
Hydraulic Tank:	30 Gal. Capacity - Side Site Gauge
Container/Box Locks:	Long Spring Loaded - 46" Useable Travel
Lights:	4-Stop/Turn/Tail Lights - 2-Backup Lights/Alarm - LED
Tool Box:	18" X 18" X 36" - Lockable
Safety Features:	I.C.C. Rear Crash Bar, Hoist Up Alarm / Light and Hoist Safety Stand
Paint:	Hoist Primed and Painted with Industrial Enamel - Black



Additional Options

Engine Over Speed Pump Protection
Auto Tarper System
Front Hook
Hot Shift PTO or Front Mount Pump
Outside Controls Available in Air or Electric
Shorter Container/ Box Locks 22"
Pintle Hitch
Wet Line Kit
On Board Scales
Lift Axle
Rear Stabilizer
Custom Paint



Manufactured By: A.A. Welding, Inc., Vancouver, Washington

A.A. Welding, Inc.
Standard Warranty

AA Welding, Inc. warrants the equipment covered by this limited warranty to be free from defects in material and workmanship under normal use, when proper service and maintenance as described in its operation and maintenance manuals are performed, for a period of 12 months from the date equipment is placed in service by the first purchaser.

This limited warranty is extended to the original user only and our obligation is limited to repairing or exchanging any part of the equipment, but not a complete roll off or packer body, provided that, in our judgment, the part is defective. Such components or parts thereof, shall be repaired or replaced *without cost* to the first purchaser for parts, labor, and transportation. Warranty repair or replacement will be performed by AA Welding, Inc., unless AA Welding approves an approved authorized alternative.

This warranty is void on any AA Welding, Inc. equipment which, in our opinion shows signs of having been subjected to abuse or misuse, negligence or accident, or having been operated beyond rated capacity, or equipment that has been repaired, altered, or modified by anyone other than AA Welding, Inc. or persons expressly authorized by AA Welding, Inc.

AA Welding, Inc. reserves the right to at any time, make changes in the design, material, and specifications of the equipment and accessories thereof, without thereby becoming obligated to make similar changes in such equipment or accessories previously manufactured.

AA Welding, Inc. does not assume any liability for loss profits, product, time, or any other direct, indirect or consequential losses, damages or delays. Other than extension of the warranty under AA Welding, Inc. extended warranty program, no employee or representative is authorized to change this warranty in any or grant any other warranty.

End User / Customer Name

Address

Model & Serial Number

Signature

Printed Name

Date of Delivery